

# Multipotential differentiation of adipose tissue-derived stem cells

Brian M Strem,<sup>1,2</sup> Kevin C Hicok,<sup>1</sup> Min Zhu,<sup>1</sup> Isabella Wulur,<sup>1</sup> Zeni Alfonso,<sup>1</sup> Ronda E Schreiber,<sup>1</sup> John K Fraser<sup>1</sup> and Marc H Hedrick<sup>1,2</sup>

<sup>1</sup>*Cytori Therapeutics, Inc., San Diego, CA, USA*

<sup>2</sup>*Departments of Surgery and Bioengineering, University of California, Los Angeles, CA, USA*

(Received for publication on February 14, 2005)

(Revised for publication on May 4, 2005)

(Accepted for publication on May 19, 2005)

**Abstract.** Tissue engineering offers considerable promise in the repair or replacement of diseased and/or damaged tissues. The cellular component of this regenerative approach will play a key role in bringing these tissue engineered constructs from the laboratory bench to the clinical bedside. However, the ideal source of cells still remains unclear and may differ depending upon the application. Current research for many applications is focused on the use of adult stem cells. The properties of adult stem cells that make them well-suited for regenerative medicine are (1) ease of harvest for autologous transplantation, (2) high proliferation rates for *ex vivo* expansion and (3) multilineage differentiation capacity. This review will highlight the use of adipose tissue as a reservoir of adult stem cells and draw conclusions based upon comparisons with bone marrow stromal cells. (Keio J Med 54 (3): 132–141, September 2005)

**Key words:** adipose tissue-derived stem cells, cell differentiation

## Introduction

White adipose tissue has the ability to dynamically expand and shrink throughout the life of an adult. This capacity is mediated by the presence of vascular and non-vascular cells that provide a pool of stem and progenitor cells with unique regenerative capacity. This review will describe the recent preclinical research focused on these stem cells and identify potential clinical applications.

Over the past 25 years bone marrow mesenchymal stem cells (also frequently referred to as marrow stromal cells and herein referred to as MSCs) have been the subject of considerable research. These cells have many properties that suggest considerable potential utility in cellular therapy for a variety of disorders. For example, their ability to differentiate into osteoblasts, both *in vitro* and *in vivo*, has led to their clinical use in pilot studies of an inherited bone disorder, Osteogenesis imperfecta<sup>1</sup> while their ability to promote revascularization following ischemic injury has led to preclinical studies in large and small animal models of

myocardial ischemia.<sup>2,3</sup>

Like marrow, adipose tissue is a mesodermally-derived organ that contains a stromal population containing microvascular endothelial cells, smooth muscle cells and stem cells.<sup>4</sup> These cells can be enzymatically digested out of adipose tissue (commonly from liposyrate) and separated from the buoyant adipocytes by centrifugation. A more homogeneous population emerges in culture under conditions supportive of MSC growth. This population (termed Adipose Tissue-Derived Stem Cells, ADSCs) shares many of the characteristics of its counterpart in marrow including extensive proliferative potential and the ability to undergo multilineage differentiation.<sup>5,6</sup>

Clonogenic assays have typically been used to quantify MSCs in marrow.<sup>7–10</sup> In these assays (colony forming units, CFU-F), cells are plated at  $\sim 1,000/\text{cm}^2$  and grown for two-three weeks. Colonies of more than 50 cells are then quantified. Using these assays, the number of MSCs in bone marrow is generally found to be approximately 1 in 25,000 to 1 in 100,000,<sup>7–10</sup> although many authors have found this frequency is influenced

by factors such as age, gender, presence of osteoporosis, and prior exposure to high dose chemotherapy or radiation.<sup>7,11–13</sup> Our unpublished data suggest that the average frequency of ADSCs in processed lipoaspirate (56 donors, median age 49) is ~2% of nucleated cells (manuscript in preparation). As with bone marrow stem cells, yield is dependent upon donor age, body mass index and tissue harvest site. This finding is consistent with previous reports showing rapid growth of ADSCs from cultures initiated at considerably lower cell density than that typically used with marrow.<sup>6,14</sup> Further, our studies have indicated that the yield of ADSCs is approximately 5,000 CFU-F per gram of adipose tissue. This compares with estimates of approximately 100–1,000 CFU-F per milliliter of bone marrow.

The significance of this difference for stem cell therapy is clear. Donor site morbidity limits the amount of marrow that can be obtained and thereby extends the time in culture required to generate a therapeutic cell dose. Thus, the volume of human marrow taken under local anesthesia is generally limited to no more than 40 ml and yields approximately  $1.2 \times 10^9$  nucleated cells.<sup>15</sup> Obtaining a larger volume necessitates the use of general anesthesia, increases donor site morbidity,<sup>16,17</sup> and further dilutes the stem cell fraction with stem cell-free blood.<sup>15</sup> At the stem cell frequency cited above,<sup>7,8</sup> this 40 ml of marrow will contain approximately  $2.4 \times 10^4$  MSCs in a skeletally mature adult. By contrast, a typical harvest of adipose tissue, under local anesthesia, can easily exceed 200 ml and yield  $\sim 2 \times 10^8$  nucleated cells per 100 ml of lipoaspirate.<sup>18</sup> Thus, 200 ml lipoaspirate will typically yield in excess of  $1 \times 10^6$  stem cells; a differential of approximately 40-fold more than that present in 40 ml of marrow.

### Cell Surface Characterization

The cell surface phenotype of human ADSCs is quite similar to MSCs (see Table).<sup>5,19</sup> It is worth noting some of the key similarities and differences between these cells. For instance, CD105, STRO-1 and CD166 (ALCAM) are three common markers used to identify cells with multilineage differentiation potential and are consistently expressed on ADSCs and MSCs.<sup>20–26</sup> Also, CD117 (the stem cell factor receptor) has been shown to be expressed on an array of totipotent or pluripotent cells including embryonic stem cells, hematopoietic stem cells, MSCs and ADSCs.<sup>27–29</sup> In addition to these multipotent markers, ADSCs and MSCs display numerous other molecules including CD29 (beta-1 integrin, which plays a critical role in therapeutic angiogenesis<sup>30</sup>), CD44 (hyaluronate receptor, which is crucial in the development of neextracellular matrix and plays a role in numerous pathologic and physiologic events) and CD49e (alpha-5 integrin, important

**Table** The Cell Surface Phenotype of ADSCs is Similar to That of Bone Marrow MSCs

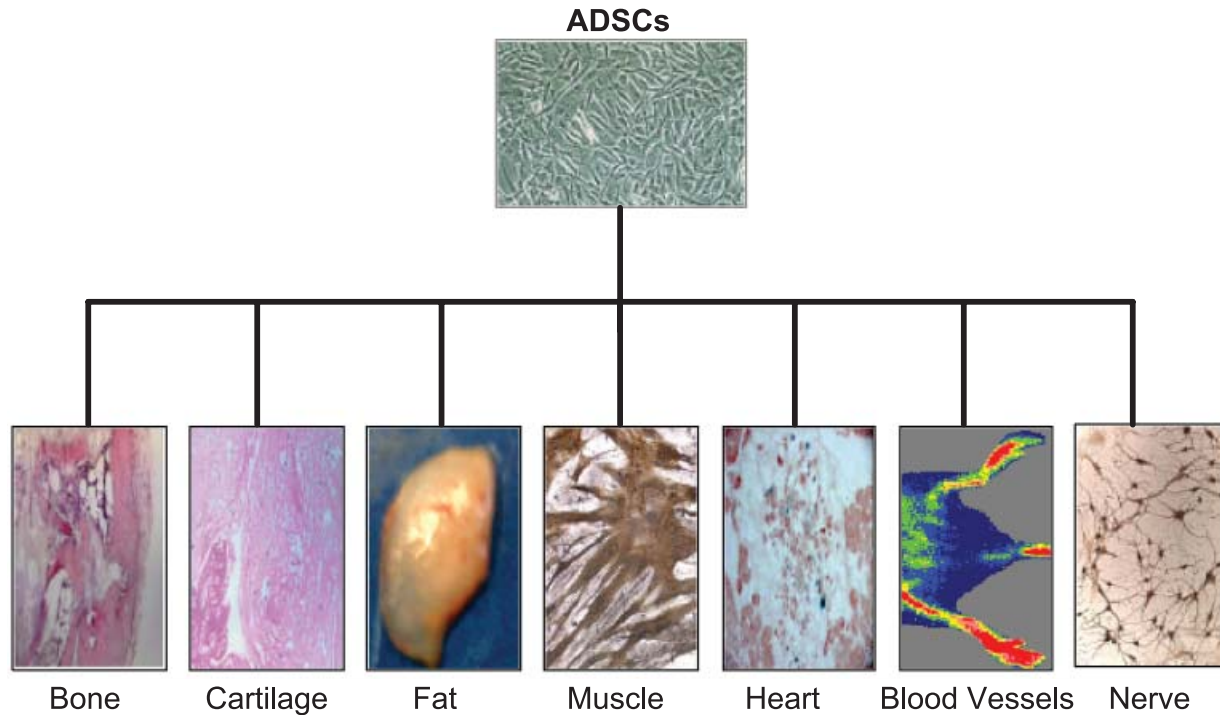
Surface marker	Expression pattern	
	ADSCs	MSCs
CD9	+	+
CD10	+	+
CD13	+	+
CD29	+	+
CD31	–	–
CD34	–	–
CD44	+	+
CD45	–	–
<b>CD49d</b>	+	–
CD49e	+	+
CD54	+	+
CD55	+	+
CD59	+	+
CD90	+	+
CD105	+	+
<b>CD106</b>	–	+
CD117	+	+
CD146	+	+
CD166	+	+
STRO-1	+	+

for cell adhesion to fibronectin). ADSCs also express high levels of CD54 (ICAM-1) when compared with BM-MSCs.<sup>19</sup> ICAM-1 is a member of the immunoglobulin supergene family and can be up-regulated in response to numerous inflammatory mediators and cytokines.<sup>31</sup>

ADSCs lack the expression of known hematopoietic and endothelial markers such as CD3, CD4, CD11c, CD14, CD15, CD16, CD19, CD31, CD33, CD38, CD56, CD62p, CD104, and CD144. Also, less than 1% of ADSCs express the HLA-DR protein and the majority express MHC Class I molecules,<sup>18</sup> suggesting their potential for allogeneic transplantation.<sup>32</sup> One difference in surface marker expression appears to be the reciprocal expression of VLA-4 (CD49d/CD29) and its cognate receptor VCAM-1 (CD106). Thus, we have observed expression of VLA-4 but not VCAM-1 by ADSCs from the majority of donors. This is the reverse of the expression pattern of these molecules by MSCs.<sup>19</sup> While the nature of this difference needs further investigation, this observation is intriguing since these molecules are involved in hematopoietic stem and progenitor cell homing to and mobilization from the bone marrow.<sup>33,34</sup>

### Multilineage Differentiation Capacity

We and others have demonstrated the ability of adipose tissue-derived stem cells to undergo differentiation



**Figure** Adipose Tissue-Derived Stem Cells are multipotent, extending beyond the traditional mesenchymal lineages.

along classical mesenchymal lineages: adipogenesis, chondrogenesis, osteogenesis, and myogenesis.<sup>4-6,35-43</sup> Non-mesenchymal lineages have also been investigated and confirm the transdifferentiation ability of ADSCs<sup>44-47</sup> (see Figure). Our data using single cell-derived clonal populations demonstrates that at least part of this plasticity resides in a population of multipotential cells.<sup>5</sup> In most respects, these data demonstrate a set of functional properties that is very similar, though not always identical, to that of MSC.

### Mesenchymal lineages

#### *Adipogenesis*

Given the origin of ADSCs it is not surprising that, when cultured in adipogenic medium, ADSCs express several adipocytic genes including lipoprotein lipase, aP2, PPAR( $\gamma$ ), leptin, Glut4, and develop lipid-laden intracellular vacuoles, the definitive marker of adipogenesis.<sup>4,5,40,48</sup> Despite certain donor-to-donor qualitative differences in adipogenic potential,<sup>48</sup> the pattern of expression of these genes appears to be very similar, if not identical, to that observed for adipogenic differentiation in MSCs.<sup>23,49,50</sup>

The *in vivo* capacity of these cells to differentiate into cells of the adipocytic lineage has also been demonstrated in studies involving implantation of cell-seeded natural (collagen and hyaluronic)<sup>51-53</sup> or syn-

thetic bioresorbable (polylactic acid, polyglycolic acid)<sup>54,55</sup> scaffolds. It is important to note that these studies generally agree that robust ectopic *in vivo* adipogenesis requires *in vitro* pre-differentiation of ADSCs prior to implantation. This requirement may be eliminated by co-implantation of cells with a source of adipogenic stimuli. Thus, Yuksel and colleagues have demonstrated ectopic adipogenesis at the site of implantation of microbeads containing insulin and insulin-like growth factor 1.<sup>56</sup> This suggests the recruitment of adipocytic stem and progenitor cells to the site of implantation, however it is not clear if this is a local recruitment or derives from distal compartments of such progenitors in fat and/or marrow.

#### *Osteogenesis*

The ability of MSCs to give rise to osteoblasts is well known.<sup>57-60</sup> Observations of patients with a rare disorder, progressive osseous heteroplasia, in which calcified nodules form in subcutaneous adipose depots, provided physiological evidence that similar cells may exist in adipose tissue.<sup>61,62</sup> In the past decade, several groups have isolated cells from adipose tissue of humans and other species capable of differentiating into osteoblasts *in vitro*.<sup>5,36,39,42,63-67</sup> Under osteogenic conditions, similar to those used for MSCs, ADSCs are observed to express genes and proteins associated with an osteoblasts phenotype, including alkaline phosphatase.

tase, type I collagen, osteopontin, osteonectin, osteocalcin, bone sialo protein, RunX-1, BMP-2, BMP-4 BMP receptors I and II, PTH-receptor.<sup>5,39</sup> ADSCs are also able to form mineralized matrix *in vitro* in both long term 2-D or 3-D osteogenic cultures.

Using a variety of supportive scaffolds, human ADSCs can form bone in immunodeficient rodent ectopic bone models.<sup>35,55,68</sup> Histologic analysis of these implants revealed cells staining positive for the human nuclear antigen, confirming that the cells making the new bone are donor derived. ADSC-derived were found lining the regions of ectopic bone and also embedded within the newly formed bone. In a murine critical size calvarial defect model, ADSCs were able to regenerate cranial bone, which spanned the defect site, within 8 to 12 weeks of implantation.<sup>14</sup> Bone formation occurred via intramembranous ossification, confirmed by a lack of chondrogenic matrix. Since the calvarium normally develops through this mechanism, ADSCs differentiated appropriately for cranial membranous bone repair. Overall, the rate and extent of bone formation was comparable to that of MSCs.

These findings supported a recent clinical report describing successful treatment of a large, bilateral calvarial defect in a seven year old girl. Repair was achieved through an approach in which autologous adipose-derived cells, iliac crest bone, and fibrin glue were combined with a resorbable mesh.<sup>69</sup> CT scans taken 3 months after surgery showed marked ossification throughout the defect. Further, the child no longer has to wear a protective helmet. This anecdotal report suggests that use of adipose-derived cells was safe and that they may have contributed to healing of a large, previously refractory defect.

### Chondrogenesis

High density micromass cultures of ADSCs and MSCs generate cellular nodules that produce large amounts of cartilage-related extracellular matrix molecules including sulfated proteoglycans, collagen II and IV, PRELP and aggrecan.<sup>4,5,23,36,38,40,41,70</sup> ADSCs seeded onto alginate discs and implanted into immunodeficient mice exhibit prolonged (12 weeks) synthesis of cartilage matrix molecules including collagen II, collagen VI, and aggrecan.<sup>38</sup> The identification of which cells (ADSCs or MSCs) are better for engineering cartilage is still under debate. We have analyzed ADSCs and MSCs from the same patients under identical conditions and found that ADSCs had greater chondrogenic ability than MSCs.<sup>6</sup> However, Winter *et al.* demonstrated that, while ADSCs and MSCs are not significantly different in their ability to undergo chondrogenesis in two-dimensional cultures, MSCs exhibited enhanced chondrogenesis in three dimensional cul-

tures.<sup>41</sup> This is in contrast to a recent *in vivo* study of mature cartilage development from ADSCs in a rabbit osteochondral defect model.<sup>43</sup> In this study the authors noted that the repair induced by ADSCs was superior to that derived from osteochondral autografts. Specifically, the Pineda score, which assesses four different parameters of cartilage repair, was greater for ADSC-derived grafts than for osteochondral grafts at each time point examined. ADSC grafts also showed superior performance in creep indentation biomechanical testing performed at 24 weeks. However, it should be noted that performance at 24 weeks was still inferior to intact cartilage. Nonetheless, these data indicate that the deficit observed by Winter *et al.* may be a culture artifact rather than an inherent limitation in the osteochondral capacity of ADSCs.

### Non-mesenchymal lineages

#### *Skeletal myogenesis*

Culture of ADSCs and MSCs in the presence of dexamethasone, hydrocortisone, and/or 5 azacytidine results in a time-dependent pattern of expression of muscle-related genes that is consistent with normal myogenesis. This is defined by early expression of key master regulatory factors MyoD1 and myf5, myf6, and myogenin followed by later expression of myosin heavy chain.<sup>5,37,71</sup> This process is associated with characteristic changes in cell morphology including generation of long, multinucleate, MyoD1-positive cells early in culture and bundles of myosin heavy chain-positive myofibrillar structures appearing after two weeks.

Thus far, only one study has investigated the use of ADSCs to restore functional capacity of damaged skeletal muscle *in vivo*. Bacou and colleagues demonstrated that ADSCs transplanted into injured regions of rabbit skeletal muscle increased muscle weight and fiber cross section area, and significantly raised the maximal contractile force compared with damaged control muscles.<sup>72</sup> The transplanted cells were identified in the region of damaged tissue and some expressed the skeletal muscle markers merosin, myogenin and multiple isoforms of myosin heavy chain, suggestive of myogenic differentiation.

#### *Cardiac*

Cardiovascular disease (CVD) has emerged as a leading cause of morbidity and mortality, accounting for approximately one-third of all deaths in 2002.<sup>73</sup> Current therapies for CVD are focused on revascularization, followed by drug therapy to mitigate the deleterious remodeling that ensues post ischemia. While this therapeutic regimen has had a substantial impact

on how CVD is treated, there is still a necessity to further advance treatment options. Cell therapy for cardiovascular diseases was originally thought to focus on the regeneration of injured myocardium. The use of progenitor/stem cells has changed this paradigm by potentially contributing to multiple mechanisms for cardiac repair. These mechanisms include, but are not limited to: increasing blood flow to the ischemic tissue (either by differentiating into neovasculature or secreting factors to recruit or expand endogenous vasculature), reducing cardiac myocyte apoptosis through a paracrine-mediated response, regulating the inflammatory milieu (which can alter the negative remodeling that ensues following acute ischemic injury), or by recruiting endogenous stem cells (i.e. from the heart<sup>74</sup> or bone marrow<sup>75</sup>) to assist in regenerating the injured tissue.

While all of these paths could potentially augment current therapies, regeneration of lost myocardium is still the ideal outcome, particularly in congestive heart failure, which involves currently irreversible loss of contractile function. Both ADSCs<sup>45,76,77</sup> and MSCs<sup>78-81</sup> have been shown to be capable of *in vitro* differentiation into cardiac myocytes. The most compelling data was obtained by Planat-Bernard *et al.* in which fresh adipose-derived cells were plated into semisolid culture. After three weeks, colonies of spontaneously beating cells were observed. These cells exhibited several molecular, electrophysiologic, and pharmacologic properties of cardiac myocytes.<sup>76</sup> However, there is a lack of data addressing the ability of ADSCs to regenerate damaged myocardium *in vivo*. In work presented at the European Society of Cardiology in Munich, Germany in 2004, Valina *et al.* presented data showing that delivery of either ADSCs or MSCs through the left coronary artery following an acute myocardial infarction in pigs resulted in improved left ventricular function after 4 weeks compared to saline-treated controls. Upon histologic analysis, the group identified donor ADSCs at the site of infarction, and that these cells expressed cardiomyocytic markers.

### Neurogenesis

*In vitro* differentiation along the neuronal lineages has also been demonstrated for both ADSCs<sup>5,46,82</sup> and MSCs.<sup>83-86</sup> Thus, treatment of rat and human MSCs or ADSCs with beta-mercaptoethanol results in rapid transition of cells to a neuronal morphology (a condensed cell body with multiple neuron-like outgrowths), and expression of neural markers including nestin, neuron-specific enolase (NSE), and neuron-specific protein (NeuN), all of which are early markers of the neuronal lineage. Similar results are seen with alternate inductive conditions such as isobutylmethyl-

lxanthine (IBMX) and dibutyryl cAMP or forskolin and butylated hydroxyanisole. We have also detected expression of trkA (a receptor for NGF) and the presence of voltage gated potassium channels. However, to date, detection of neural markers in *in vitro* differentiated ADSCs and MSCs has been restricted to these early genes; no expression of markers characteristic of mature neurons, oligodendrocytes, or astrocytes has been described. This may suggest that the expression of these markers is the result of disordered gene expression resulting from the toxic inductive stimulus or that the induction is unmasking an inherent neuronal potential that is only partially supported by the culture conditions.

The latter interpretation is supported by *in vivo* studies in which ADSCs and MSCs have been implanted into the CNS of experimental animals. Zhao *et al.*<sup>87</sup> have demonstrated that implantation of MSCs into the cortex of rats following ischemic injury resulted in significantly improved performance in a limb placement test and that the implanted cells had undergone an *in vivo* change in marker expression consistent with differentiation along astrocytic, oligodendrocytic, and neural lineages. However, there was no evidence for incorporation of these cells into the cerebral architecture. Therefore, it is possible that the observed functional improvement was due to an indirect mechanism, for example, paracrine expression of angiogenic and/or anti-apoptotic factors by the implanted cells would promote survival of functionally compromised but viable host tissue.<sup>88,89</sup> Other studies have also demonstrated engraftment of MSCs into the region in the absence of injury albeit with modest evidence of differentiation.<sup>90,91</sup> Nonetheless, these data provide substantial support for a potential role of MSCs in direct or indirect (gene-modified) therapy for the CNS.<sup>92,93</sup>

ADSCs have also been applied in the setting of experimental stroke. Thus, Kang *et al.* directly implanted ADSCs into the brain of rats following 90 minutes of middle cerebral artery occlusion.<sup>94</sup> In some studies, the ADSCs were transduced with either the lacZ gene or the gene encoding brain-derived neurotrophic factor (BDNF) as both a marker and a potentially therapeutic agent. Marked cells were seen throughout the infarct area 14 days after implantation and a fraction of these cells co-expressed MAP2 (4% of marked cells) or GFAP (9% of marked cells) suggesting a degree of neural differentiation. No data were presented with regard to potential fusion between donor and recipient cells. As with the MSC studies, ADSC-treated animals showed significant improvement in neurologic testing with the animals receiving BDNF-transduced cells exhibiting significantly better recovery of function than those treated with unmodified ADSC. The same group also examined the co-culture of human ADSCs and murine NSCs, and observed that when NSCs were cul-

tured on mitomycin-treated ADSC-monolayers, their proliferation was decreased, but neural differentiation was increased. However, when NSCs were cultured with ADSC-conditioned medium or co-cultured with permeable filter on which ADSCs were grown, the proliferation of NSCs significantly decreased and glial differentiation increased, but their neural differentiation was not affected. Thus Kang *et al.* concluded that direct physical contact between ADSCs and NSCs is required for induction of neural differentiation.<sup>95</sup>

### Other applications

#### Therapeutic angiogenesis

Restoring blood flow to ischemic tissue has proven instrumental in the treatment of patients with acute myocardial infarctions. However, this application is not the only one that could greatly benefit by increased angiogenesis. Therapeutic angiogenesis, potentially from ADSCs and MSCs, has an extremely broad range of clinical applications under investigation, such as ischemic cardiomyopathy, peripheral vascular disease, ischemic stroke, acute tubular necrosis, diabetic retinopathy, ischemic encephalopathy, traumatic spinal cord injuries, and transplant related ischemia. Both ADSCs and MSCs have been shown to increase angiogenesis to ischemic tissue; however the underlying mechanism remains unclear. Both cell types have been shown to excrete substantial quantities of angiogenic growth factors, including VEGF, PlGF, bFGF, angiogenin, GM-CSF, MCP-1 and SDF-1 $\alpha$ .<sup>96,97</sup> Both cell types have also been shown to be capable of endothelial differentiation.<sup>44,98</sup>

Miranville *et al.* have presented data supporting the presence of cells within adipose tissue that differentiated into endothelium.<sup>99</sup> Thus, CD34<sup>+</sup>/CD31<sup>-</sup> cells within adipose were shown to be capable of *in vitro* differentiation into cells that expressed both CD31 and von Willebrand factor, both markers of mature endothelium. Most importantly, the authors demonstrated the ability of these cells to improve blood flow and capillary density in a NOD-SCID mouse model of hind limb ischemia. These data are confirmed by another study showing that delivery of ADSCs to immunodeficient animals following induction of severe hind limb ischemia results in accelerated restoration of perfusion.<sup>96</sup> As an interesting side note, Miranville *et al.* also reported that approximately 18% of CD34<sup>+</sup>/CD31<sup>-</sup> cells co-expressed ABCG2, a protein associated with the side population (SP) stem cell phenotype; overall approximately 4% of all non-buoyant adipose-tissue-derived cells express ABCG2.<sup>99</sup> It should be noted that there, at present, are no data addressing the question of whether or not the endothe-

lial and mesenchymal differentiation capacity within adipose tissue reside within the same cells.

#### Gene delivery

A number of investigators have transduced ADSCs in order to facilitate tracking or to engender a therapeutic effect. Thus, Leo *et al.* used Ad-CMV-luciferase to allow non-invasive, real-time tracking of ADSCs in rat spine.<sup>100</sup> Similarly, Dragoo *et al.*<sup>35</sup> infected both MSCs and ADSCs with E1A-deleted-type 5 adenovirus constructs containing the BMP-2 (bone morphogenetic protein-2) gene or the bacterial beta-galactosidase (lacZ) gene. LacZ gene transduction efficiency was 35% for MSCs and 55% for ADSCs. Ad-BMP2 infection resulted in levels of expression of BMP-2 protein that were three-fold higher than those derived from MSCs. Ad-BMP-2 infected ADSCs exhibited *in vitro* osteoblastic differentiation in the absence of exogenous osteogenic factors. They also exhibited robust ectopic *in vivo* production of bone when cells were implanted into a collagen sponge within the subcutaneous space.<sup>35</sup> Given the success of unmodified MSCs in treatment of osteogenesis imperfecta<sup>101,102</sup> these data support the potential for transplant of allogeneic or gene-modified ADSCs for genetic disorders of the skeletal system.

Kang *et al.*<sup>94</sup> have also used an E1A-deleted type 5 adenovirus to infect ADSCs. As described above, these studies employed transduction of a tracking gene (lacZ) and a potentially therapeutic gene Brain-Derived Neurotrophic Factor (BDNF) achieving 100% and 94% transduction efficiency, respectively. Transduced cells were implanted into areas of the brain that had undergone transient (90 minute) ischemia-reperfusion injury. Donor cells capable of continued expression of the transgene were retained to 30 days, the longest time point examined in this study.

Finally, our group has published results of a study comparing infection of ADSCs with oncoretroviral, and lentiviral vectors.<sup>103</sup> The primary lentivirus used was the VSV-G pseudotyped HIV-1 vector SIN18-Rh-MLV-E (VSV). Infection by the VSV-G pseudotyped MuLV oncoretrovirus SR( $\alpha$ )L-EGFP and a second lentivirus construct, RRL-PGK-EGFP-SIN18, was also used. Direct comparison of infection of the lentiviruses and the oncoretrovirus was possible due to common envelope protein and the similarity of the transcription level driven in transduced cells. Thus, we were able to infect ADSCs with the same number of EGFP transduction units (virus preparations standardized to drive the same level of GFP expression in control cells) and determine efficiency by flow cytometry three days and one week after infection. The lentiviral constructs resulted in 4–10-fold higher expression than the retroviral vector. The percentage of transduced cells was

not high (10–15%) but remained stable in culture over 100 days. Moreover, using a lentiviral vector with the cytomegalovirus promoter resulted in a transduction efficiency of >90% at a MOI of 14. Studies using lentiviral-infected cells (RRL-PGK-EGFP-SIN18; MOI 59) in which transduction efficiency was 98% at day 3 and >95% at day 100 allowed examination of gene expression during *in vitro* differentiation. Retention of marker gene (EGFP) expression was observed following both adipogenic and osteogenic differentiation.

### Hematopoietic support

The ability to support hematopoiesis is another property of MSCs that may be important in clinical applications. Indeed, co-infusion of MSCs with grafts containing hematopoietic stem cells has been shown to enhance the rate of hematopoietic engraftment in human clinical studies.<sup>104</sup> Hematopoietic support is also important in transduction of CD34-positive hematopoietic stem and progenitor cells.<sup>105–107</sup> While no study to date has specifically examined the ability of ADSCs to support hematopoiesis, a recent study has claimed to demonstrate that adipose tissue contains a population of cells with hematopoietic stem cell activity; that is, a population of cells capable of rescuing lethally irradiated animals.<sup>108</sup> Thus, intraperitoneal transplant of  $10^7$  fresh adipose or marrow cells was associated with 40% survival following 10 Gy irradiation. Recovery of platelet and white blood cells counts was more rapid with marrow than for adipose tissue cells (8 weeks vs 10 weeks for return to normal levels). However, adipose-derived cell transplant resulted in a very low level of hematopoietic chimerism (1.7% marrow hematopoietic progenitor cells of donor origin). This suggests that the survival advantage conferred by adipose-derived cell transplant is due to enhancement of the recovery of *endogenous* hematopoietic stem cells from the otherwise lethal irradiation in a manner that is generally consistent with the human co-infusion study cited above.<sup>104</sup>

### Summary

In summary, adipose tissue, like bone marrow, contains a population of cells that has extensive self-renewal capacity and the ability to differentiate along multiple lineages. The cells possessing this activity can be obtained in large numbers at high frequency from a tissue source that can be extracted in large quantities with minimal morbidity, unlike marrow. These cells can also be infected by adenoviral, oncoretroviral, and lentiviral vectors with moderate to high efficiency. Thus, adipose tissue appears to represent a potential clinically

useful source of cells for cellular therapy, tissue engineering and gene transfer applications.

### References

1. Horwitz EM, Gordon PL, Koo WK, Marx JC, Neel MD, McNall RY, Muul L, Hofmann T: Isolated allogeneic bone marrow-derived mesenchymal cells engraft and stimulate growth in children with osteogenesis imperfecta: Implications for cell therapy of bone. *Proc Natl Acad Sci USA* 2002; 99: 8932–8937
2. Shake JG, Gruber PJ, Baumgartner WA, Senechal G, Meyers J, Redmond JM, Pittenger MF, Martin BJ: Mesenchymal stem cell implantation in a swine myocardial infarct model: engraftment and functional effects. *Ann Thorac Surg* 2002; 73: 1919–1925
3. Barbash IM, Chouraqui P, Baron J, Feinberg MS, Etzion S, Tessone A, Miller L, Guetta E, Zipori D, Kedes LH, Kloner RA, Leor J: Systemic delivery of bone marrow-derived mesenchymal stem cells to the infarcted myocardium: feasibility, cell migration, and body distribution. *Circulation* 2003; 108: 863–868
4. Zuk PA, Zhu M, Mizuno H, Huang J, Futrell JW, Katz AJ, Benhaim P, Lorenz HP, Hedrick MH: Multilineage cells from human adipose tissue: implications for cell-based therapies. *Tissue Eng* 2001; 7: 211–228
5. Zuk PA, Zhu M, Ashjian P, De Ugarte DA, Huang JI, Mizuno H, Alfonso ZC, Fraser JK, Benhaim P, Hedrick MH: Human adipose tissue is a source of multipotent stem cells. *Mol Biol Cell* 2002; 13: 4279–4295
6. De Ugarte DA, Morizono K, Elbarbary A, Alfonso Z, Zuk PA, Zhu M, Dragoo JL, Ashjian P, Thomas B, Benhaim P, Chen I, Fraser J, Hedrick MH: Comparison of multi-lineage cells from human adipose tissue and bone marrow. *Cells Tissues Organs* 2003; 174: 101–109
7. D'Ippolito G, Schiller PC, Ricordi C, Roos BA, Howard GA: Age-related osteogenic potential of mesenchymal stromal stem cells from human vertebral bone marrow. *J Bone Miner Res* 1999; 14: 1115–1122
8. Muschler GF, Nitto H, Boehm CA, Easley KA: Age- and gender-related changes in the cellularity of human bone marrow and the prevalence of osteoblastic progenitors. *J Orthop Res* 2001; 19: 117–125
9. Banfi A, Bianchi G, Galotto M, Cancedda R, Quarto R: Bone marrow stromal damage after chemo/radiotherapy: occurrence, consequences and possibilities of treatment. *Leuk Lymphoma* 2001; 42: 863–870
10. Banfi A, Podesta M, Fazzuoli L, Sertoli MR, Venturini M, Santini G, Cancedda R, Quarto R: High-dose chemotherapy shows a dose-dependent toxicity to bone marrow osteoprogenitors: a mechanism for post-bone marrow transplantation osteopenia. *Cancer* 2001; 92: 2419–2428
11. Galotto M, Berisso G, Delfino L, Podesta M, Ottaggio L, Dallorso S, Dufour C, Ferrara GB, Abbondandolo A, Dini G, Bacigalupo A, Cancedda R, Quarto R: Stromal damage as consequence of high-dose chemo/radiotherapy in bone marrow transplant recipients. *Exp Hematol* 1999; 27: 1460–1466
12. Oreffo RO, Bord S, Triffitt JT: Skeletal progenitor cells and ageing human populations. *Clin Sci (Lond)* 1998; 94: 549–555
13. Stenderup K, Justesen J, Eriksen EF, Rattan SI, Kassem M: Number and proliferative capacity of osteogenic stem cells are maintained during aging and in patients with osteoporosis. *J Bone Miner Res* 2001; 16: 1120–1129
14. Cowan CM, Shi YY, Aalami OO, Chou YF, Mari C, Thomas R,

- Quarto N, Contag CH, Wu B, Longaker MT: Adipose-derived adult stromal cells heal critical-size mouse calvarial defects. *Nat Biotechnol* 2004; 22: 560–567
15. Bacigalupo A, Tong J, Podesta M, Piaggio G, Figari O, Colombo P, Sogno G, Tedone E, Moro F, Van Lint MT, *et al*: Bone marrow harvest for marrow transplantation: effect of multiple small (2 ml) or large (20 ml) aspirates. *Bone Marrow Transplant* 1992; 9: 467–470
  16. Auquier P, Macquart-Moulin G, Moatti JP, Blache JL, Novakovitch G, Blaise D, Faucher C, Viens P, Maraninchi D: Comparison of anxiety, pain and discomfort in two procedures of hematopoietic stem cell collection: leukapheresis and bone marrow harvest. *Bone Marrow Transplant* 1995; 16: 541–547
  17. Nishimori M, Yamada Y, Hoshi K, Akiyama Y, Hoshi Y, Morishima Y, Tsuchida M, Fukuhara S, Kodera Y: Health-related quality of life of unrelated bone marrow donors in Japan. *Blood* 2002; 99: 1995–2001
  18. Aust L, Devlin B, Foster SJ, Halvorsen YD, Hicok K, du LT, Sen A, Willingmyre GD, Gimble JM: Yield of human adipose-derived adult stem cells from liposuction aspirates. *Cytotherapy* 2004; 6: 7–14
  19. De Ugarte DA, Alfonso Z, Zuk PA, Elbarbary A, Zhu M, Ashjian P, Benhaim P, Hedrick MH, Fraser JK: Differential expression of stem cell mobilization-associated molecules on multi-lineage cells from adipose tissue and bone marrow. *Immunol Lett* 2003; 89: 267–270
  20. Barry FP, Boynton RE, Haynesworth S, Murphy JM, Zaia J: The monoclonal antibody SH-2, raised against human mesenchymal stem cells, recognizes an epitope on endoglin (CD105). *Biochem Biophys Res Commun* 1999; 265: 134–139
  21. Gronthos S, Franklin DM, Leddy HA, Robey PG, Storms RW, Gimble JM: Surface protein characterization of human adipose tissue-derived stromal cells. *J Cell Physiol* 2001; 189: 54–63
  22. Majumdar MK, Thiede MA, Mosca JD, Moorman M, Gerson SL: Phenotypic and functional comparison of cultures of marrow-derived mesenchymal stem cells (MSCs) and stromal cells. *J Cell Physiol* 1998; 176: 57–66
  23. Pittenger MF, Mackay AM, Beck SC, Jaiswal RK, Douglas R, Mosca JD, Moorman MA, Simonetti DW, Craig S, Marshak DR: Multilineage potential of adult human mesenchymal stem cells. *Science* 1999; 284: 143–147
  24. Dennis JE, Carbillet JP, Caplan A, Charbord P: The STRO-1 + Marrow Cell Population Is Multipotential. *Cells Tissues Organs* 2002; 170: 73–82
  25. Gronthos S, Graves SE, Ohta S, Simmons PJ: The STRO-1+ fraction of adult human bone marrow contains the osteogenic precursors. *Blood* 1994; 84: 4164–4173
  26. Simmons PJ, Gronthos S, Zannettino A, Ohta S, Graves S: Isolation, characterization and functional activity of human marrow stromal progenitors in hemopoiesis. *Prog Clin Biol Res* 1994; 389: 271–280
  27. Aye MT, Hashemi S, Leclair B, Zeibdawi A, Trudel E, Halpenny M, Fuller V, Cheng G: Expression of stem cell factor and c-kit mRNA in cultured endothelial cells, monocytes and cloned human bone marrow stromal cells (CFU-RF). *Exp Hematol* 1992; 20: 523–527
  28. Lemoli RM, Gulati SC: Effect of stem cell factor (c-kit ligand), granulocyte-macrophage colony stimulating factor and interleukin 3 on hematopoietic progenitors in human long-term bone marrow cultures. *Stem Cells (Dayt)* 1993; 11: 435–444
  29. Ogawa M, Nishikawa S, Yoshinaga K, Hayashi S, Kunisada T, Nakao J, Kina T, Sudo T, Kodama H, Nishikawa S: Expression and function of c-Kit in fetal hemopoietic progenitor cells: transition from the early c-Kit-independent to the late c-Kit-dependent wave of hemopoiesis in the murine embryo. *Development* 1993; 117: 1089–1098
  30. Li TS, Ito H, Hayashi M, Furutani A, Matsuzaki M, Hamano K: Cellular expression of integrin-beta(1) is of critical importance for inducing therapeutic angiogenesis by cell implantation. *Cardiovasc Res* 2005; 65: 64–72
  31. Roebuck KA, Finnegan A: Regulation of intercellular adhesion molecule-1 (CD54) gene expression. *J Leukoc Biol* 1999; 66: 876–888
  32. Lee RH, Kim B, Choi I, Kim H, Choi HS, Suh K, Bae YC, Jung JS: Characterization and expression analysis of mesenchymal stem cells from human bone marrow and adipose tissue. *Cell Physiol Biochem* 2004; 14: 311–324
  33. Simmons PJ, Masinovsky B, Longenecker BM, Berenson R, Torok-Storb B, Gallatin WM: Vascular cell adhesion molecule-1 expressed by bone marrow stromal cells mediates the binding of hematopoietic progenitor cells. *Blood* 1992; 80: 388–395
  34. Sudhoff T, Sohngen D: Circulating Endothelial Adhesion Molecules (sE-selectin, sVCAM-1 and sICAM-1) During rHuG-CSF-Stimulated Stem Cell Mobilization. *J Hematother Stem Cell Res* 2002; 11: 147–151
  35. Dragoo JL, Choi JY, Lieberman JR, Huang J, Zuk PA, Zhang J, Hedrick MH, Benhaim P: Bone induction by BMP-2 transduced stem cells derived from human fat. *J Orthop Res* 2003; 21: 622–629
  36. Dragoo JL, Samimi B, Zhu M, Hame SL, Thomas BJ, Lieberman JR, Hedrick MH, Benhaim P: Tissue-engineered cartilage and bone using stem cells from human infrapatellar fat pads. *J Bone Joint Surg Br* 2003; 85: 740–747
  37. Mizuno H, Zuk PA, Zhu M, Lorenz HP, Benhaim P, Hedrick MH: Myogenic differentiation by human processed lipoaspirate cells. *Plast Reconstr Surg* 2002; 109: 199–209
  38. Erickson GR, Gimble JM, Franklin DM, Rice HE, Awad H, Guilak F: Chondrogenic potential of adipose tissue-derived stromal cells *in vitro* and *in vivo*. *Biochem Biophys Res Commun* 2002; 290: 763–769
  39. Halvorsen YD, Franklin D, Bond AL, Hitt DC, Auchter C, Boskey AL, Paschalis EP, Wilkison WO, Gimble JM: Extracellular matrix mineralization and osteoblast gene expression by human adipose tissue-derived stromal cells. *Tissue Eng* 2001; 7: 729–741
  40. Wickham MQ, Erickson GR, Gimble JM, Vail TP, Guilak F: Multipotent stromal cells derived from the infrapatellar fat pad of the knee. *Clin Orthop* 2003; 196–212
  41. Winter A, Breit S, Parsch D, Benz K, Steck E, Hauner H, Weber RM, Ewerbeck V, Richter W: Cartilage-like gene expression in differentiated human stem cell spheroids: a comparison of bone marrow-derived and adipose tissue-derived stromal cells. *Arthritis Rheum* 2003; 48: 418–429
  42. Tholpady SS, Katz AJ, Ogle RC: Mesenchymal stem cells from rat visceral fat exhibit multipotential differentiation *in vitro*. *Anat Rec* 2003; 272A: 398–402
  43. Nathan S, Das DS, Thambyah A, Fen C, Goh J, Lee EH: Cell-based therapy in the repair of osteochondral defects: a novel use for adipose tissue. *Tissue Eng* 2003; 9: 733–744
  44. Planat-Benard V, Silvestre JS, Cousin B, Andre M, Nibbelink M, Tamarat R, Clergue M, Manneville C, Saillan-Barreau C, Duriez M, Tedgui A, Levy B, Penicaud L, Casteilla L: Plasticity of human adipose lineage cells toward endothelial cells: physiological and therapeutic perspectives. *Circulation* 2004; 109: 656–663
  45. Rangappa S, Fen C, Lee EH, Bongso A, Wei ES: Transformation of adult mesenchymal stem cells isolated from the fatty tissue into cardiomyocytes. *Ann Thorac Surg* 2003; 75: 775–779
  46. Safford KM, Hicok KC, Safford SD, Halvorsen YD, Wilkison WO, Gimble JM, Rice HE: Neurogenic differentiation of murine and human adipose-derived stromal cells. *Biochem Biophys Res Commun* 2002; 294: 371–379

47. Safford KM, Safford SD, Gimble JM, Shetty AK, Rice HE: Characterization of neuronal/glial differentiation of murine adipose-derived adult stromal cells. *Exp Neurol* 2004; 187: 319–328
48. Sen A, Lea-Currie YR, Sujkowska D, Franklin DM, Wilkison WO, Halvorsen YD, Gimble JM: Adipogenic potential of human adipose derived stromal cells from multiple donors is heterogeneous. *J Cell Biochem* 2001; 81: 312–319
49. Peister A, Mellad JA, Larson BL, Hall BM, Gibson LF, Prockop DJ: Adult stem cells from bone marrow (MSCs) isolated from different strains of inbred mice vary in surface epitopes, rates of proliferation, and differentiation potential. *Blood* 2003
50. Conget PA, Minguell JJ: Phenotypical and functional properties of human bone marrow mesenchymal progenitor cells. *J Cell Physiol* 1999; 181: 67–73
51. Halbleib M, Skurk T, de Luca C, von Heimburg D, Hauner H: Tissue engineering of white adipose tissue using hyaluronic acid-based scaffolds. I: *in vitro* differentiation of human adipocyte precursor cells on scaffolds. *Biomaterials* 2003; 24: 3125–3132
52. von Heimburg D, Zachariah S, Heschel I, Kuhling H, Schoof H, Hafemann B, Pallua N: Human preadipocytes seeded on freeze-dried collagen scaffolds investigated *in vitro* and *in vivo*. *Biomaterials* 2001; 22: 429–438
53. von Heimburg D, Zachariah S, Low A, Pallua N: Influence of different biodegradable carriers on the *in vivo* behavior of human adipose precursor cells. *Plast Reconstr Surg* 2001; 108: 411–420
54. Patrick CW Jr, Chauvin PB, Hogley J, Reece GP: Preadipocyte seeded PLGA scaffolds for adipose tissue engineering. *Tissue Eng* 1999; 5: 139–151
55. Lee JA, Parrett BM, Conejero JA, Laser J, Chen J, Kogon AJ, Nanda D, Grant RT, Breitbart AS: Biological alchemy: engineering bone and fat from fat-derived stem cells. *Ann Plast Surg* 2003; 50: 610–617
56. Yuksel E, Weinfeld AB, Cleek R, Waugh JM, Jensen J, Boutros S, Shenaq SM, Spira M: De novo adipose tissue generation through long-term, local delivery of insulin and insulin-like growth factor-1 by PLGA/PEG microspheres in an *in vivo* rat model: a novel concept and capability. *Plast Reconstr Surg* 2000; 105: 1721–1729
57. Owen M: Marrow stromal stem cells. *J Cell Sci Suppl* 1988; 10: 63–76
58. Bennett JH, Joyner CJ, Triffitt JT, Owen ME: Adipocytic cells cultured from marrow have osteogenic potential. *J Cell Sci* 1991; 99 (Pt 1): 131–139
59. Hicok KC, Thomas T, Gori F, Rickard DJ, Spelsberg TC, Riggs BL: Development and characterization of conditionally immortalized osteoblast precursor cell lines from human bone marrow stroma. *J Bone Miner Res* 1998; 13: 205–217
60. Nuttall ME, Patton AJ, Olivera DL, Nadeau DP, Gowen M: Human trabecular bone cells are able to express both osteoblastic and adipocytic phenotype: implications for osteopenic disorders. *J Bone Miner Res* 1998; 13: 371–382
61. Kaplan FS, Hahn GV, Zasloff MA: Heterotopic Ossification: Two Rare Forms and What They Can Teach Us. *J Am Acad Orthop Surg* 1994; 2: 288–296
62. Shore EM, Ahn J, Jan dB, Li M, Xu M, Gardner RJ, Zasloff MA, Whyte MP, Levine MA, Kaplan FS: Paternally inherited inactivating mutations of the *GNAS1* gene in progressive osseous heteroplasia. *N Engl J Med* 2002; 346: 99–106
63. Huang JI, Beanes SR, Zhu M, Lorenz HP, Hedrick MH, Benhaim P: Rat extramedullary adipose tissue as a source of osteochondrogenic progenitor cells. *Plast Reconstr Surg* 2002; 109: 1033–1041
64. Ogawa R, Mizuno H, Watanabe A, Migita M, Shimada T, Hyakusoku H: Osteogenic and chondrogenic differentiation by adipose-derived stem cells harvested from GFP transgenic mice. *Biochem Biophys Res Commun* 2004; 313: 871–877
65. Hattori H, Sato M, Masuoka K, Ishihara M, Kikuchi T, Matsui T, Takase B, Ishizuka T, Kikuchi M, Fujikawa K, Ishihara M: Osteogenic potential of human adipose tissue-derived stromal cells as an alternative stem cell source. *Cells Tissues Organs* 2004; 178: 2–12
66. Kang SK, Putnam L, Dufour J, Ylostalo J, Jung JS, Bunnell BA: Expression of telomerase extends the lifespan and enhances osteogenic differentiation of adipose tissue-derived stromal cells. *Stem Cells* 2004; 22: 1356–1372
67. Lecoquer L, Ouhayoun JP: *In vitro* induction of osteogenic differentiation from non-osteogenic mesenchymal cells. *Biomaterials* 1997; 18: 989–993
68. Hicok KC, Du Laney TV, Zhou YS, Halvorsen YD, Hitt DC, Cooper LF, Gimble JM: Human adipose-derived adult stem cells produce osteoid *in vivo*. *Tissue Eng* 2004; 10: 371–380
69. Lendeckel S, Jodicke A, Christophis P, Heidinger K, Wolff J, Fraser JK, Hedrick MH, Berthold L, Howaldt HP: Autologous stem cells (adipose) and fibrin glue used to treat widespread traumatic calvarial defects: case report. *J Craniomaxillofac Surg* 2004; 32: 370–373
70. Caplan AI: Mesenchymal stem cells. *J Orthop Res* 1991; 9: 641–650
71. Wakitani S, Saito T, Caplan AI: Myogenic cells derived from rat bone marrow mesenchymal stem cells exposed to 5-azacytidine. *Muscle Nerve* 1995; 18: 1417–1426
72. Bacou F, el Andaloussi RB, Daussin PA, Micallef JP, Levin JM, Chammas M, Casteilla L, Reyne Y, Nougues J: Transplantation of adipose tissue-derived stromal cells increases mass and functional capacity of damaged skeletal muscle. *Cell Transplant* 2004; 13: 103–111
73. World Health Organization: The World Health Report – Changing History. Evans, Tim, Beaglehole, Robert, Kim, Jim, and Teixeira, Paulo. 2004. France, World Health Organization. Ref Type: Report
74. Beltrami AP, Barlucchi L, Torella D, Baker M, Limana F, Chimenti S, Kasahara H, Rota M, Musso E, Urbanek K, Leri A, Kajstura J, Nadal-Ginard B, Anversa P: Adult cardiac stem cells are multipotent and support myocardial regeneration. *Cell* 2003; 114: 763–776
75. Askari AT, Unzek S, Popovic ZB, Goldman CK, Forudi F, Kiedrowski M, Rovner A, Ellis SG, Thomas JD, DiCorleto PE, Topol EJ, Penn MS: Effect of stromal-cell-derived factor 1 on stem-cell homing and tissue regeneration in ischaemic cardiomyopathy. *Lancet* 2003; 362: 697–703
76. Planat-Benard V, Menard C, Andre M, Puceat M, Perez A, Garcia-Verdugo JM, Penicaud L, Casteilla L: Spontaneous cardiomyocyte differentiation from adipose tissue stroma cells. *Circ Res* 2004; 94: 223–229
77. Gaustad KG, Boquest AC, Anderson BE, Gerdes AM, Collas P: Differentiation of human adipose tissue stem cells using extracts of rat cardiomyocytes. *Biochem Biophys Res Commun* 2004; 314: 420–427
78. Toma C, Pittenger MF, Cahill KS, Byrne BJ, Kessler PD: Human mesenchymal stem cells differentiate to a cardiomyocyte phenotype in the adult murine heart. *Circulation* 2002; 105: 93–98
79. Makino S, Fukuda K, Miyoshi S, Konishi F, Kodama H, Pan J, Sano M, Takahashi T, Hori S, Abe H, Hata J, Umezawa A, Ogawa S: Cardiomyocytes can be generated from marrow stromal cells *in vitro*. *J Clin Invest* 1999; 103: 697–705
80. Fukuda K: Development of regenerative cardiomyocytes from

- mesenchymal stem cells for cardiovascular tissue engineering. *Artif Organs* 2001; 25: 187–193
81. Rangappa S, Entwistle JW, Wechsler AS, Kresh JY: Cardiomyocyte-mediated contact programs human mesenchymal stem cells to express cardiogenic phenotype. *J Thorac Cardiovasc Surg* 2003; 126: 124–132
  82. Ashjian PH, Elbarbary AS, Edmonds B, DeUgarte D, Zhu M, Zuk PA, Lorenz HP, Benhaim P, Hedrick MH: *In vitro* differentiation of human processed lipoaspirate cells into early neural progenitors. *Plast Reconstr Surg* 2003; 111: 1922–1931
  83. Woodbury D, Schwarz EJ, Prockop DJ, Black IB: Adult rat and human bone marrow stromal cells differentiate into neurons. *J Neurosci Res* 2000; 61: 364–370
  84. Deng W, Obrocka M, Fischer I, Prockop DJ: *In vitro* differentiation of human marrow stromal cells into early progenitors of neural cells by conditions that increase intracellular cyclic AMP. *Biochem Biophys Res Commun* 2001; 282: 148–152
  85. Kohyama J, Abe H, Shimazaki T, Koizumi A, Nakashima K, Gojo S, Taga T, Okano H, Hata J, Umezawa A: Brain from bone: efficient “meta-differentiation” of marrow stroma-derived mature osteoblasts to neurons with Noggin or a demethylating agent. *Differentiation* 2001; 68: 235–244
  86. Dezawa M, Kanno H, Hoshino M, Cho H, Matsumoto N, Itokazu Y, Tajima N, Yamada H, Sawada H, Ishikawa H, Mimura T, Kitada M, Suzuki Y, Ide C: Specific induction of neuronal cells from bone marrow stromal cells and application for autologous transplantation. *J Clin Invest* 2004; 113: 1701–1710
  87. Zhao LR, Duan WM, Reyes M, Keene CD, Verfaillie CM, Low WC: Human bone marrow stem cells exhibit neural phenotypes and ameliorate neurological deficits after grafting into the ischemic brain of rats. *Exp Neurol* 2002; 174: 11–20
  88. Chen J, Zhang ZG, Li Y, Wang L, Xu YX, Gautam SC, Lu M, Zhu Z, Chopp M: Intravenous administration of human bone marrow stromal cells induces angiogenesis in the ischemic boundary zone after stroke in rats. *Circ Res* 2003; 92: 692–699
  89. Li Y, Chen J, Chen XG, Wang L, Gautam SC, Xu YX, Katakowski M, Zhang LJ, Lu M, Janakiraman N, Chopp M: Human marrow stromal cell therapy for stroke in rat: neurotrophins and functional recovery. *Neurology* 2002; 59: 514–523
  90. Azizi SA, Stokes D, Augelli BJ, DiGirolamo C, Prockop DJ: Engraftment and migration of human bone marrow stromal cells implanted in the brains of albino rats – similarities to astrocyte grafts. *Proc Natl Acad Sci USA* 1998; 95: 3908–3913
  91. Kopen GC, Prockop DJ, Phinney DG: Marrow stromal cells migrate throughout forebrain and cerebellum, and they differentiate into astrocytes after injection into neonatal mouse brains. *Proc Natl Acad Sci USA* 1999; 96: 10711–10716
  92. Prockop DJ, Azizi SA, Phinney DG, Kopen GC, Schwarz EJ: Potential use of marrow stromal cells as therapeutic vectors for diseases of the central nervous system. *Prog Brain Res* 2000; 128: 293–297
  93. Prockop DJ, Azizi SA, Colter D, DiGirolamo C, Kopen G, Phinney DG: Potential use of stem cells from bone marrow to repair the extracellular matrix and the central nervous system. *Biochem Soc Trans* 2000; 28: 341–345
  94. Kang SK, Lee DH, Bae YC, Kim HK, Baik SY, Jung JS: Improvement of neurological deficits by intracerebral transplantation of human adipose tissue-derived stromal cells after cerebral ischemia in rats. *Exp Neurol* 2003; 183: 355–366
  95. Kang SK, Jun ES, Bae YC, Jung JS: Interactions between human adipose stromal cells and mouse neural stem cells *in vitro*. *Brain Res Dev Brain Res* 2003; 145: 141–149
  96. Rehman J, Traktuev D, Li J, Merfeld-Clauss S, Temm-Grove CJ, Bovenkerk JE, Pell CL, Johnstone BH, Consideine RV, March KL: Secretion of angiogenic and antiapoptotic factors by human adipose stromal cells. *Circulation* 2004; 109: 1292–1298
  97. Kinnaird T, Stabile E, Burnett MS, Shou M, Lee CW, Barr S, Fuchs S, Epstein SE: Local delivery of marrow-derived stromal cells augments collateral perfusion through paracrine mechanisms. *Circulation* 2004; 109: 1543–1549
  98. Al Khaldi A, Al Sabti H, Galipeau J, Lachapelle K: Therapeutic angiogenesis using autologous bone marrow stromal cells: improved blood flow in a chronic limb ischemia model. *Ann Thorac Surg* 2003; 75: 204–209
  99. Miranville A, Heeschen C, Sengenès C, Curat CA, Busse R, Bouloumie A: Improvement of postnatal neovascularization by human adipose tissue-derived stem cells. *Circulation* 2004; 110: 349–355
  100. Leo BM, Li X, Balian G, Anderson DG: *In vivo* bioluminescent imaging of virus-mediated gene transfer and transduced cell transplantation in the intervertebral disc. *Spine* 2004; 29: 838–844
  101. Horwitz EM, Prockop DJ, Gordon PL, Koo WW, Fitzpatrick LA, Neel MD, McCarville ME, Orchard PJ, Pyeritz RE, Brenner MK: Clinical responses to bone marrow transplantation in children with severe osteogenesis imperfecta. *Blood* 2001; 97: 1227–1231
  102. Horwitz EM, Prockop DJ, Fitzpatrick LA, Koo WW, Gordon PL, Neel M, Sussman M, Orchard P, Marx JC, Pyeritz RE, Brenner MK: Transplantability and therapeutic effects of bone marrow-derived mesenchymal cells in children with osteogenesis imperfecta. *Nat Med* 1999; 5: 309–313
  103. Morizono K, De Ugarte DA, Zhu M, Zuk P, Elbarbary A, Ashjian P, Benhaim P, Chen IS, Hedrick MH: Multilineage cells from adipose tissue as gene delivery vehicles. *Hum Gene Ther* 2003; 14: 59–66
  104. Koc ON, Gerson SL, Cooper BW, Dyhouse SM, Haynesworth SE, Caplan AI, Lazarus HM: Rapid hematopoietic recovery after coinfusion of autologous-blood stem cells and culture-expanded marrow mesenchymal stem cells in advanced breast cancer patients receiving high-dose chemotherapy. *J Clin Oncol* 2000; 18: 307–316
  105. Nolte JA, Smogorzewska EM, Kohn DB: Analysis of optimal conditions for retroviral-mediated transduction of primitive human hematopoietic cells. *Blood* 1995; 86: 101–110
  106. Dunbar CE, Kohn DB, Schiffmann R, Barton NW, Nolte JA, Esplin JA, Pensiero M, Long Z, Lockey C, Emmons RV, Csik S, Leitman S, Krebs CB, Carter C, Brady RO, Karlsson S: Retroviral transfer of the glucocerebrosidase gene into CD34+ cells from patients with Gaucher disease: *in vivo* detection of transduced cells without myeloablation. *Hum Gene Ther* 1998; 9: 2629–2640
  107. Reese JS, Koc ON, Gerson SL: Human mesenchymal stem cells provide stromal support for efficient CD34+ transduction. *J Hematother Stem Cell Res* 1999; 8: 515–523
  108. Cousin B, Andre M, Arnaud E, Penicaud L, Casteilla L: Reconstitution of lethally irradiated mice by cells isolated from adipose tissue. *Biochem Biophys Res Commun* 2003; 301: 1016–1022